

# SUGGESTED INSTALLATION OF ACTION UNITS IN TWIN-ENGINE MOTOR VESSEL FOR MR GARY RENDALL



Rx Motor Channel



Rx Steering Channel



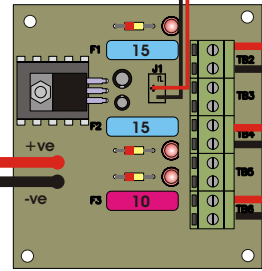
Electronic units shown are available from [www.component-shop.co.uk](http://www.component-shop.co.uk)



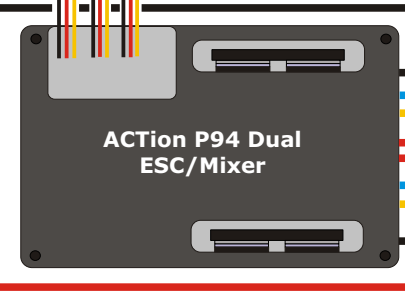
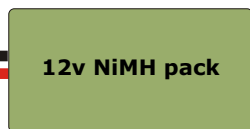
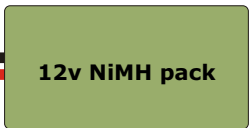
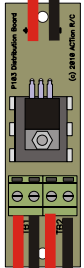
Rx Power Input ("Batt")



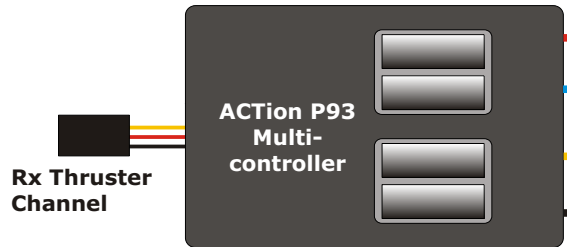
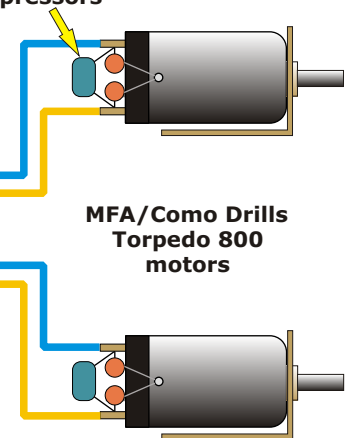
Main Power ON/OFF



P103 Parallel Power Board



RFI suppressors



Rx Thruster Channel

Raboesch 7.2v Bow Thruster

