



ACTION P80S Condor 20A ESC

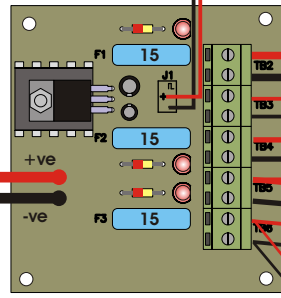
T12 motor

© Action R/C Electronics

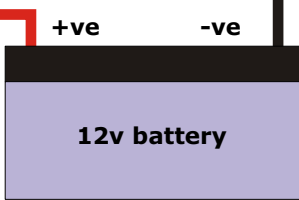
Rx Throttle Ch

Rx Power Input ("Batt")

Main Power ON/OFF



P102 Power D/B



12v battery

Rx Steering Ch

Rudder Servo

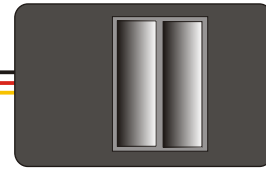
Rx Spare Propo Ch*

P44 Twin Switch

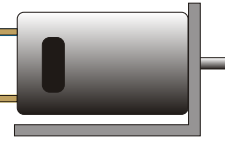
Lighting #1

Lighting #2

ACTION P80S Condor 20A ESC



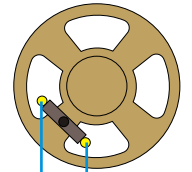
T12 motor



ACTION P100 Digital Sound FX Unit (Engine and Horn)

P101 15W Audio Mixer/Booster

8Ω x 100mm speaker



%!* Old Smokey

Graupner 12v Pump #1951

Rx Spare Propo Ch*

ACTION P91 Hi-Load Twin Switch

Fire Monitors

PWM motor speed regulator

M7G motor/gearbox kit

12v Cooling-water Pump

* Must be proportional channels (not "Gear" switch)

SUGGESTED INSTALLATION OF ACTION UNITS IN "FLYING PHANTOM" TUG FOR MR JOHN BRADFORD

Drawn by Dave Millbourn