



Rx Throttle Channel
(LH Tx Stick Up &
Down)

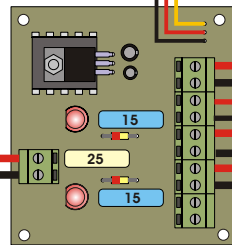
Rx Steering
Channel (RH Tx
Stick Side to Side)

5 Volt supply to
Rx Power Input
("Batt")

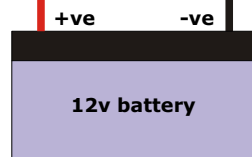
ON/OFF Switch



Rudder Servo

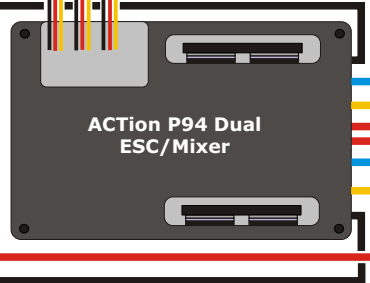


ACTION P92 Power
Distribution Board



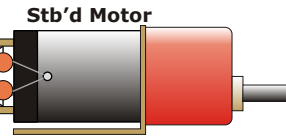
12v battery

Rx Aux Channel
(RH Tx Stick Up &
Down)



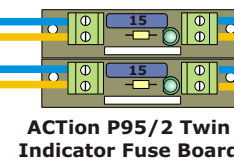
ACTION P94 Dual
ESC/Mixer

RFI suppressors

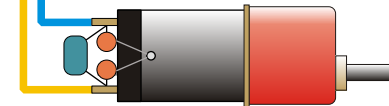


Stb'd Motor

(MFA 6:1 geared 500 motors shown)



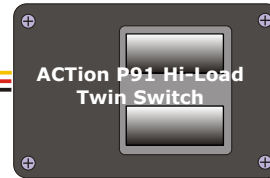
ACTION P95/2 Twin
Indicator Fuse Board



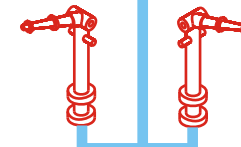
Port Motor

Graupner 12v
Pump #1951

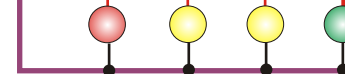
Graupner 12v
Pump #1951



ACTION P91 Hi-Load
Twin Switch



Fire Monitors



Lights 12v

INSTALLATION OF ACTION UNITS IN "SMIT NEDERLAND" FOR MR ALAN GREGORY

Drawn by Dave Milbourn

© Action R/C Electronics